

# 20 WALNUT STREET

Wellesley Hills, MA



LOCATED BY THE JUNCTION OF  
RTE. 16 & 128  
OVERLOOKING THE CHARLES RIVER



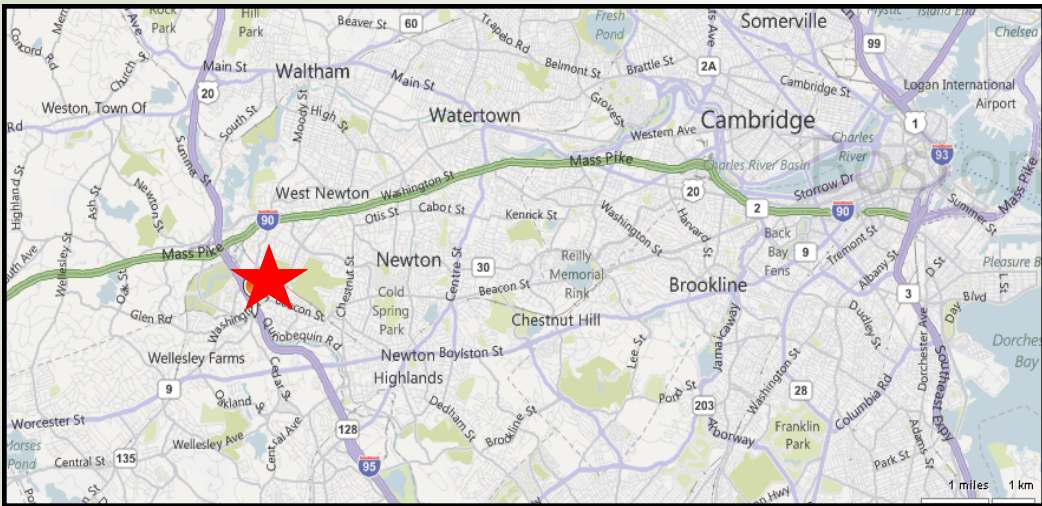
**HAYNES  
MANAGEMENT, INC.**

**781-235-4300**

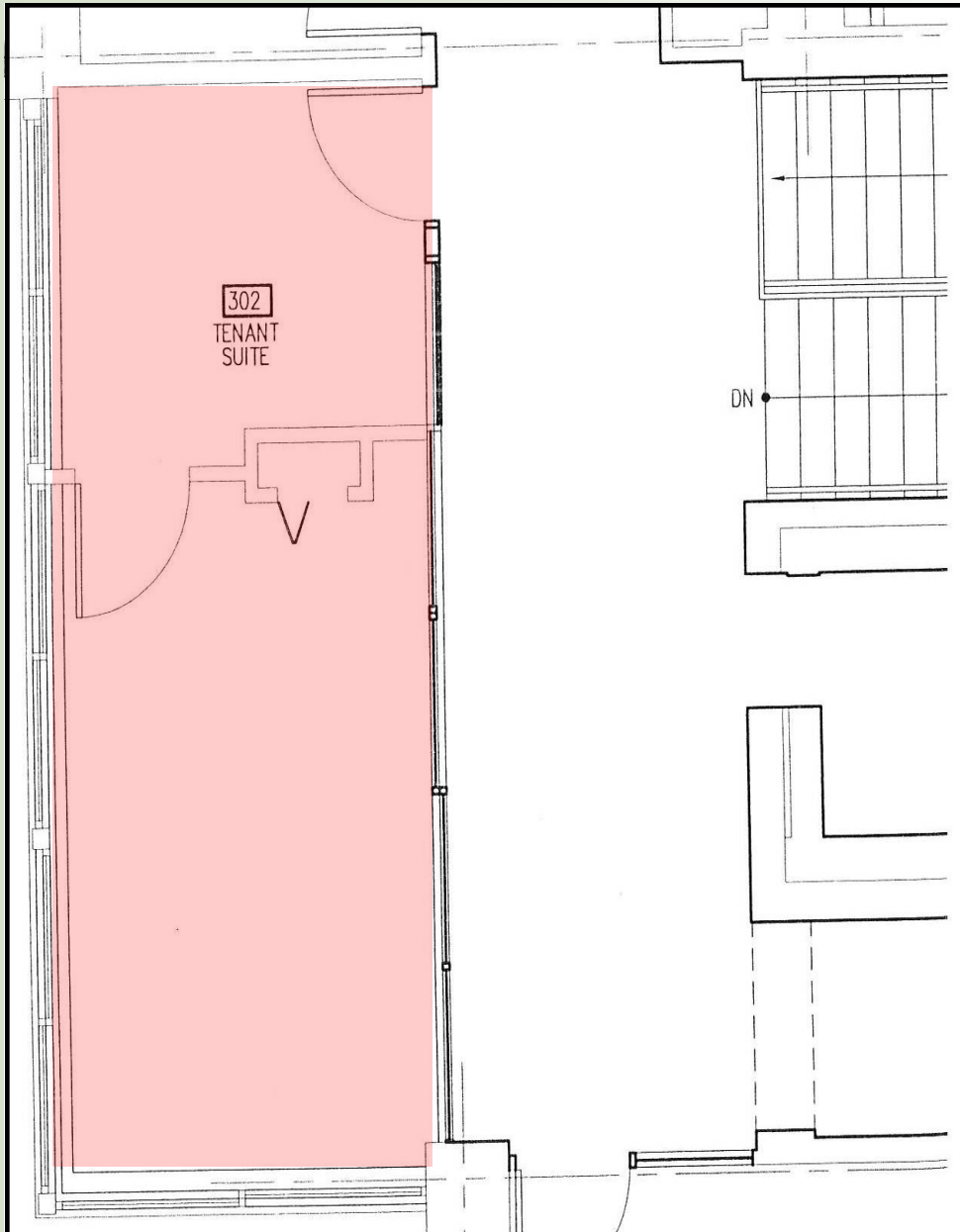
[www.haynesmanagement.com](http://www.haynesmanagement.com)

All information furnished regarding this property is from sources deemed reliable and is submitted subject to errors, omissions, modifications and withdrawals without notice. No warranty or representation is made as to the accuracy of any information contained herein.

# OFFICE SUITE AVAILABLE: 294 R.S.F - Third Floor



**OFFICE SUITE AVAILABLE:  
294 R.S.F - Third Floor**



**20 Walnut offers first quality office/medical suites, many with attractive river views.**

**Excellent location provides quick and easy access to and from all major highways west of Boston for employees and visitors.**

**The building has a two story parking garage; therefore, many of the parking spaces are covered.**

**For more information:  
781-235-4300  
[www.haynesmanagement.com](http://www.haynesmanagement.com)**