

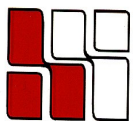
36 WASHINGTON STREET
Wellesley Hills, MA



**Currently Available:
2,302 R.S.F.**

**Located by the junction of
Route 16 & 128**

**Many amenities within walking
distance such as: banks, a health club,
restaurants, post office and more!**



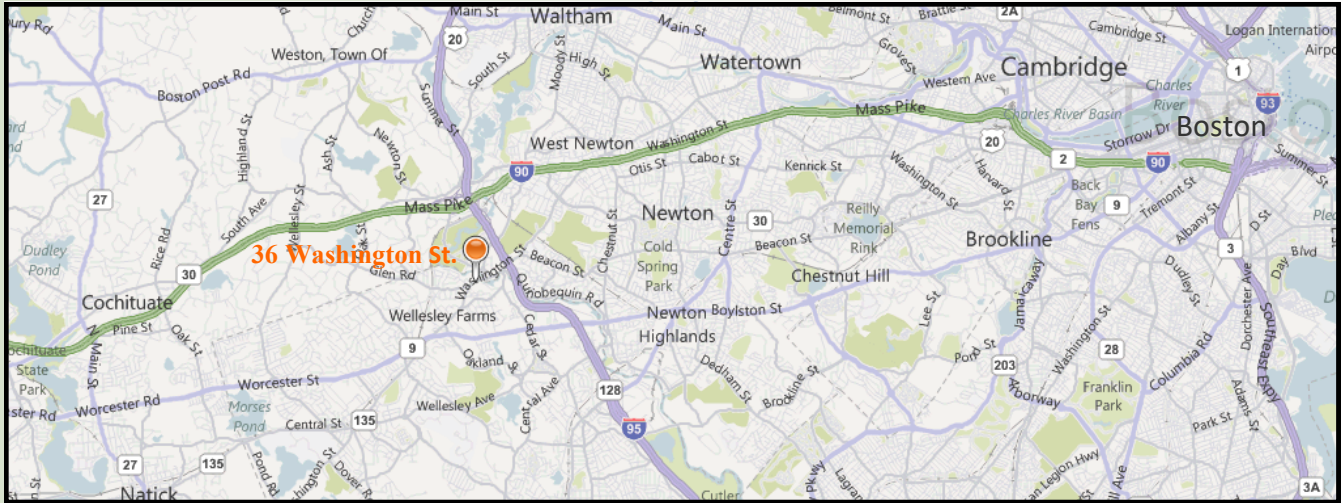
**HAYNES
MANAGEMENT, INC.**

781-235-4300

www.haynesmanagement.com



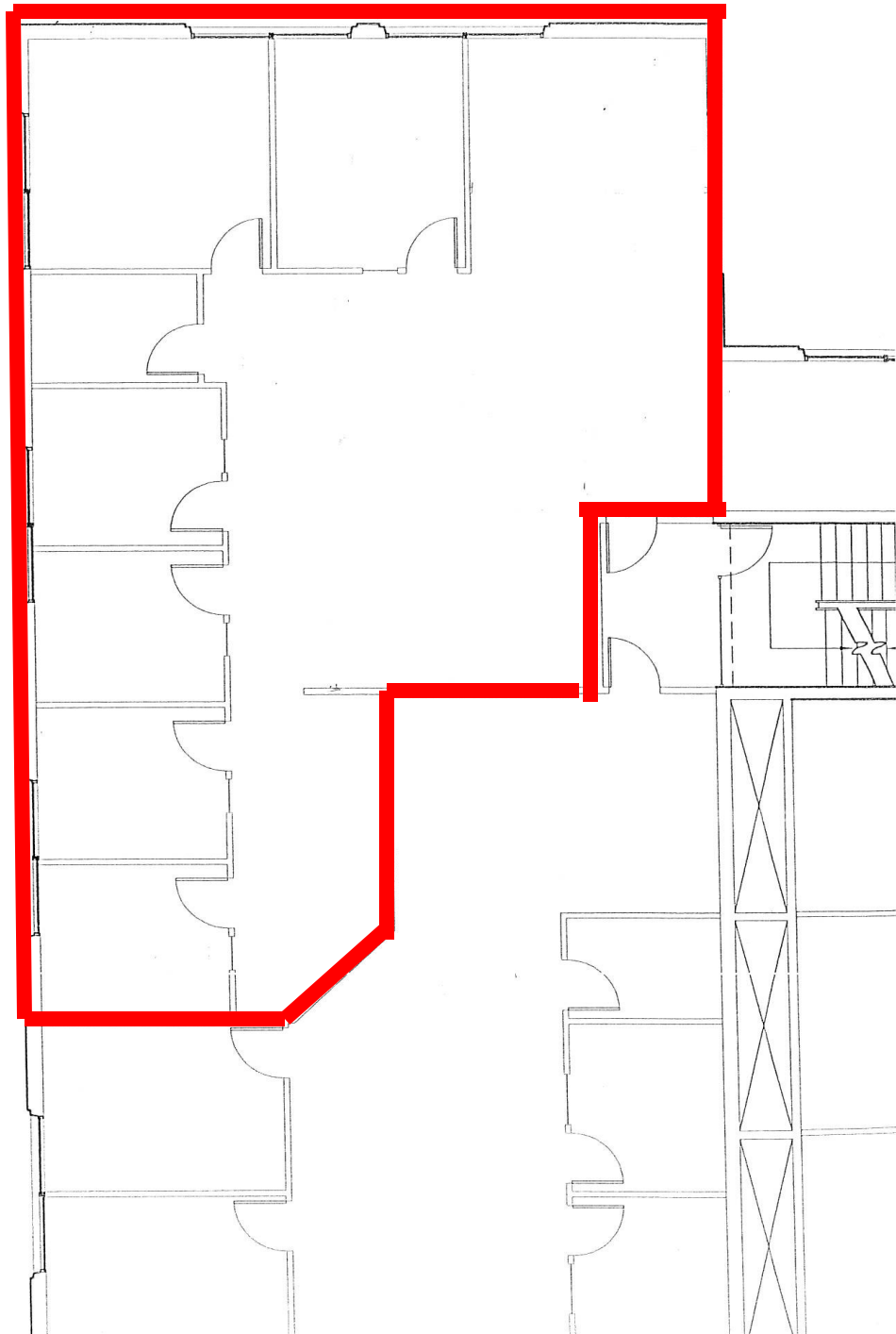
OFFICE SUITE AVAILABLE: 2,302 R.S.F



For more information:
781-235-4300
www.haynesmanagement.com

36 Washington Street, Wellesley Hills 2,302 R.S.F on the First Floor

36 Washington Street - 2,302r.s.f.



For more information:
781-235-4300
www.haynesmanagement.com