

40 WASHINGTON STREET

Wellesley Hills, MA



**Available:
2,023 RSF
First Floor**

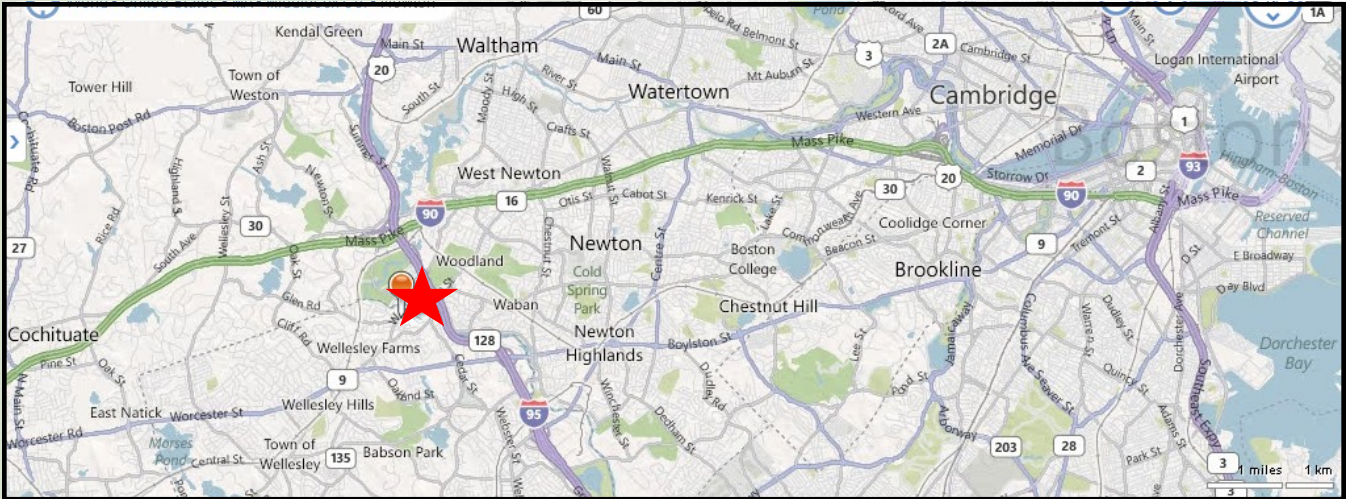
HAYNES 
MANAGEMENT INC.

781-235-4300

www.haynesmanagement.com

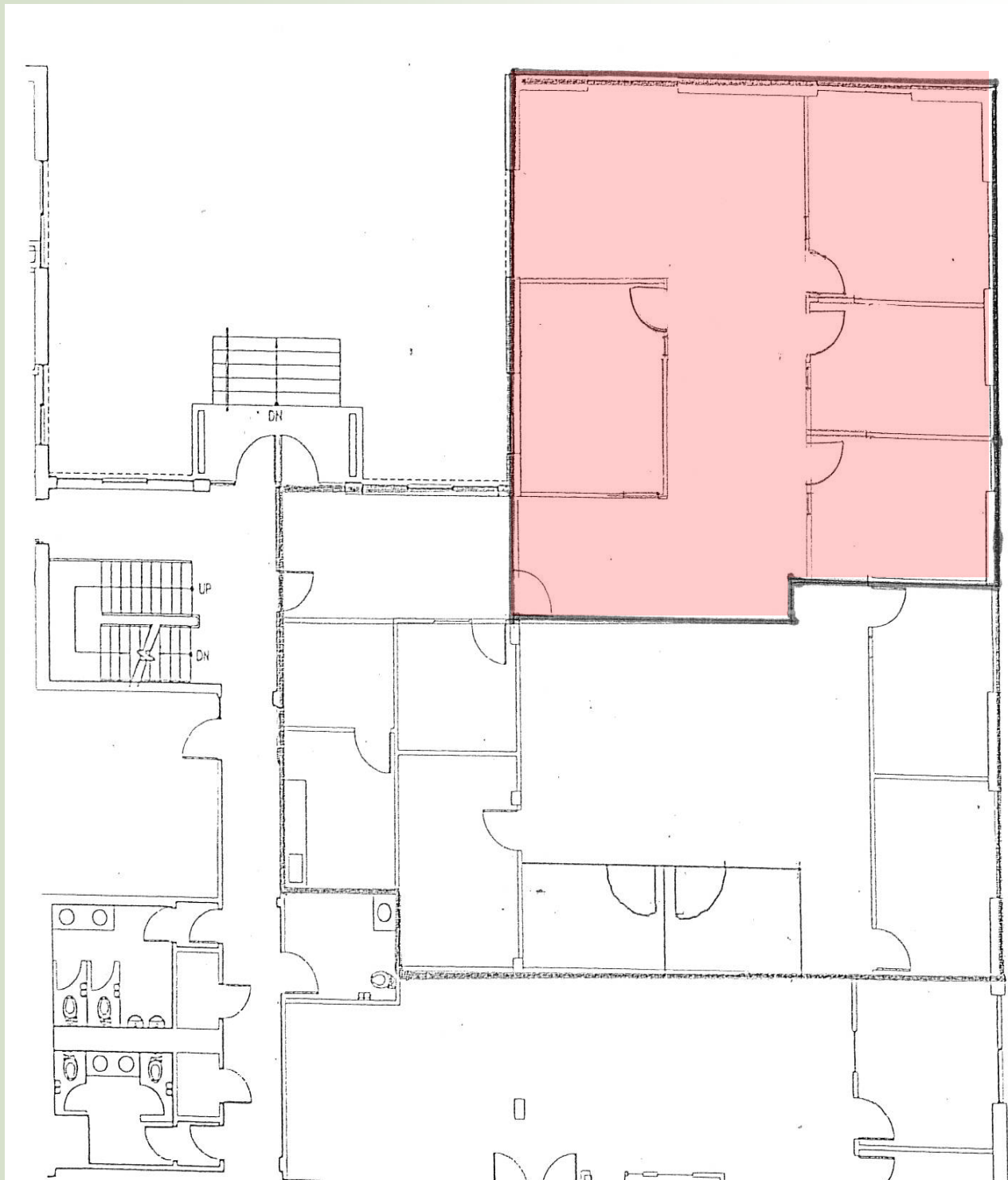
All information furnished regarding this property is from sources deemed reliable and is submitted subject to errors, omissions, modifications and withdrawals without notice. No warranty or representation is made as to the accuracy of any information contained herein.

OFFICE SUITE AVAILABLE: 2,023 RSF



For more information:
781-235-4300
www.haynesmanagement.com

**OFFICE SUITE AVAILABLE:
2,023 RSF**



**For more information:
781-235-4300
www.haynesmanagement.com**